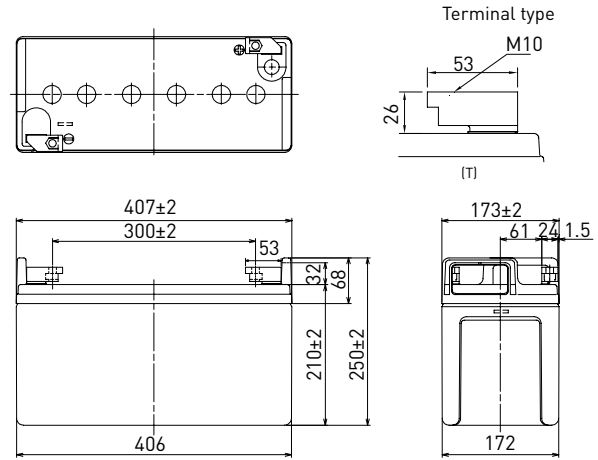


LC-QA06210TP

FOR STANDBY POWER SUPPLIES.
EXPECTED TRICKLE DESIGN LIFE: 15 YEARS AT 20°C.

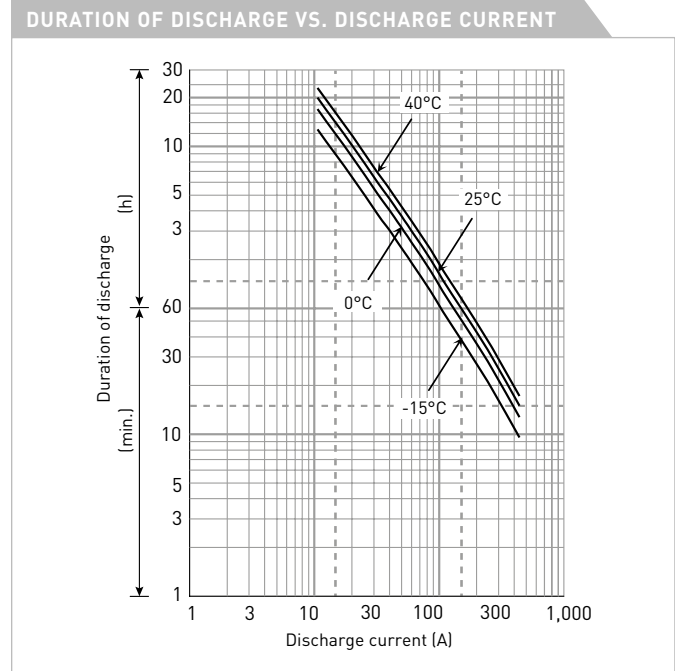
DIMENSIONS (MM)



Contents indicated (including the recycle marking, etc.) are subject to change without notice.

Battery case resin: flame retardant (UL94 V-0)

SPECIFICATIONS		
Name	LC-QA06210TP	
Nominal voltage	6V	
Nominal capacity (20 hour rate)	210Ah	
Dimensions	Length	407mm
	Width	173mm
	Height	250mm
Approx. mass	36.5kg	
Terminal	M10 T-shape	
Capacity (25°C)	20 hour rate	212Ah
	10 hour rate	202Ah
	3 hour rate	176Ah
	1 hour rate	135Ah
Impedance	Fully charged battery (25°C)	1.5mΩ
Temperature dependency of capacity (20 hour rate)	40°C	102%
	25°C	100%
	0°C	85%
	-15°C	65%
Self-discharge (25°C)	After 3 month	91%
	After 6 month	82%
	After 12 month	64%



WATT TABLE (25°C)													[Wattage/battery]	
Cut-off	15min.	20min.	30min.	45min.	1h	1.5h	2h	3h	4h	5h	6h	10h	20h	
4.80V	2,220	1,816	1,349	986	769	561	467	343	274	222	191	121	61.8	
4.95V	2,167	1,773	1,317	964	749	546	454	337	268	215	185	117	61.3	
5.10V	2,089	1,709	1,274	954	729	531	448	331	262	209	180	115	61.1	
5.25V	2,063	1,696	1,264	939	708	517	439	325	260	206	179	114	60.6	
5.40V	1,966	1,687	1,223	905	698	509	428	319	254	203	177	113	59.8	

AMPERE TABLE (25°C)													[Ampere/battery]	
Cut-off	15min.	20min.	30min.	45min.	1h	1.5h	2h	3h	4h	5h	6h	10h	20h	
4.80V	440	364	274	200	153	107	88.1	61.5	47.6	39.5	32.3	20.5	10.6	
4.95V	438	362	272	195	144	105	87.5	60.4	47.1	38.8	32.2	20.4	10.6	
5.10V	436	358	268	193	140	104	86.4	60.0	46.7	38.2	32.1	20.3	10.6	
5.25V	412	341	263	191	135	103	85.4	58.7	46.2	38.0	32.0	20.2	10.6	
5.40V	398	333	259	165	131	92.3	81.1	57.3	45.6	37.8	31.0	20.1	10.4	

All mentioned values are average values

LC-QA06210TP

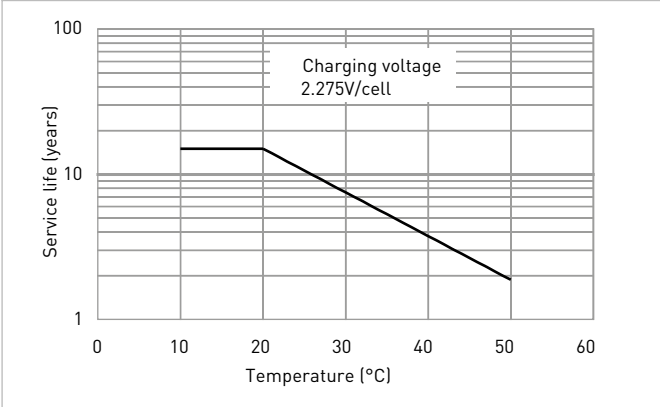
CHARGING METHOD (25°C)

Trickle use Control voltage: 6.80V - 6.90V
Initial current: 31.5A or smaller

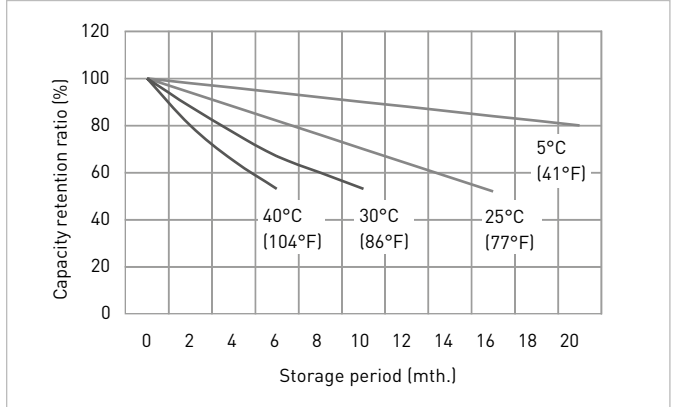
CUT-OFF VOLTAGE

Discharge current	10.5A - 42.0A	42.0A - 105A	105A - 210A	210A - 420A	420A - 630A
Cut-off voltage	5.25V	5.10V	4.95V	4.65V	4.35V

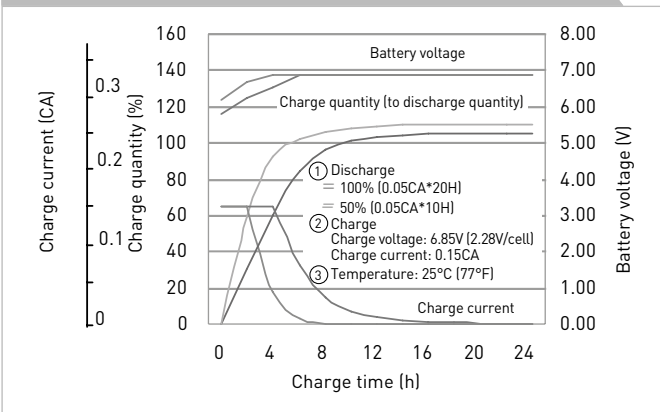
INFLUENCE OF TEMPERATURE ON TRICKLE LIFE



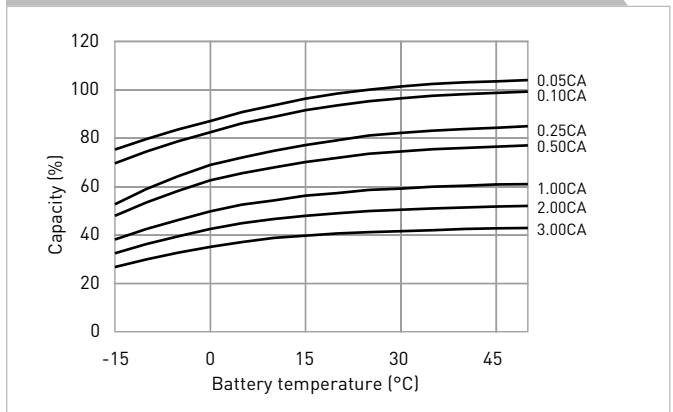
RESIDUAL CAPACITY TEST RESULT



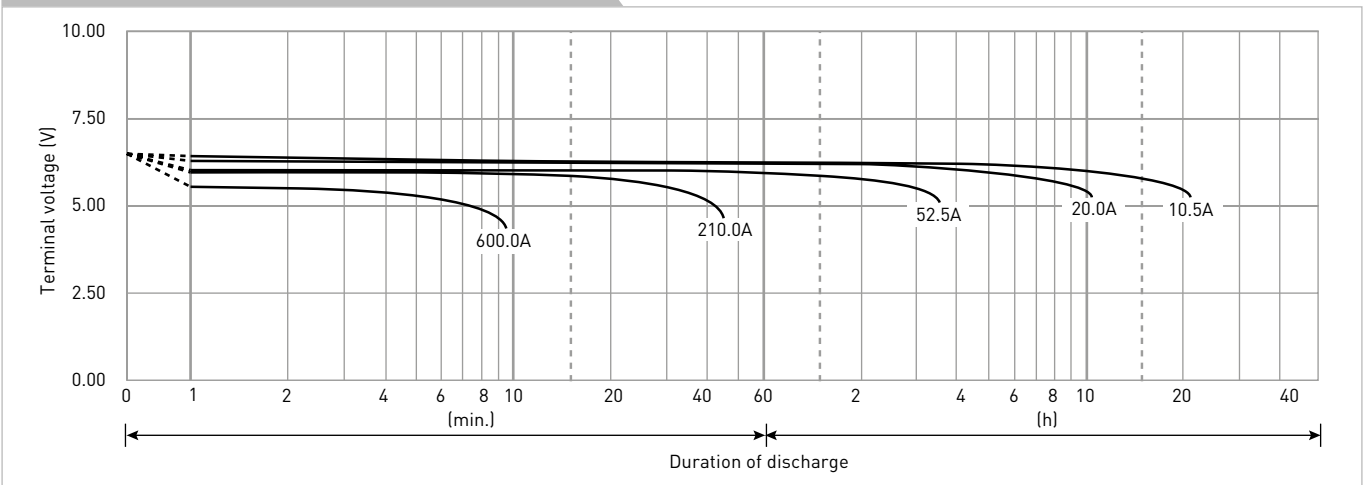
CONSTANT-VOLTAGE CONSTANT-CURRENT CHARGE CHARACTERISTICS FOR TRICKLE USE



DISCHARGE CAPACITY BY TEMPERATURE AND BY DISCHARGE CURRENT



DISCHARGE CHARACTERISTICS



The data in this document are for descriptive purposes only and are not intended to make or imply any guarantee or warranty. Regarding handling and safety please consult our VRLA technical handbook chapter 1.